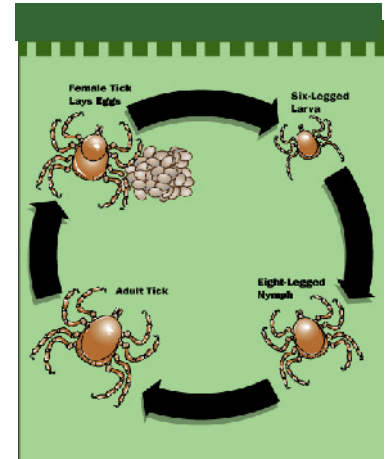
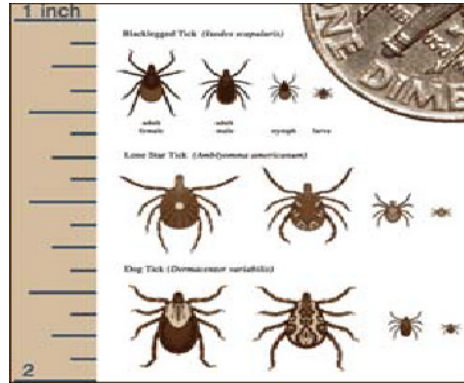


East End Pest Management

(631)259-9025

(631)771-3145

(631)506-8407



Biology and Life cycle of the TICK

The Tick passes through four life stages (egg, Larva, Nymph, and Adult) over a period of two years. The Deer tick is known as a three-host tick which means that it feeds on three different hosts during its life cycle. All life stages besides "egg" must take a blood meal to develop, and the adult female must feed to mature the eggs.

The Adult Deer Tick is about the size of a sesame seed (2.5 mm), oval, with four pairs of legs and a flattened body. Adult Deer Ticks are most active in October and November and again during April and May. They commonly attach to white tailed deer, dogs, horses, and humans. April through November adults may be found waiting in ambush on vegetation from ground level to as much as 18 inches high for a suitable host to pass by. East End Pest Management recommends sprays every thirty days (or as specified by label), and are available April through November.

PERSONAL PROTECTION

If you find an attached (embedded in your skin) tick, remove it promptly. Grasp the Tick's mouthparts from the side with a fine pointed tweezer or small forceps as close to the skin as possible and pull gently but steadily upwards. You want to avoid crushing the bloated abdomen of the tick which, if squeezed, might introduce the spirochetes and other body fluids into the wound on your skin. After removing the tick, enclose it in a small piece of clear adhesive tape; attach to an index card which has on it- the location of the bite on the body as well as the geographical location on your property or other that the bite occurred. Call us at East End Pest Management and we will have the Tick identified. **Your family's safety is very important to us.**

Be aware not all infected individuals develop the infamous rash. Other symptoms include fatigue, headache, neck stiffness, pain or stiffness in muscles and/or joints, jaw discomfort, fever, swollen glands or conjunctivitis. If you experience the rash or these symptoms as the result of a tick bite please consult your physician. For more details please call today. Thank you.